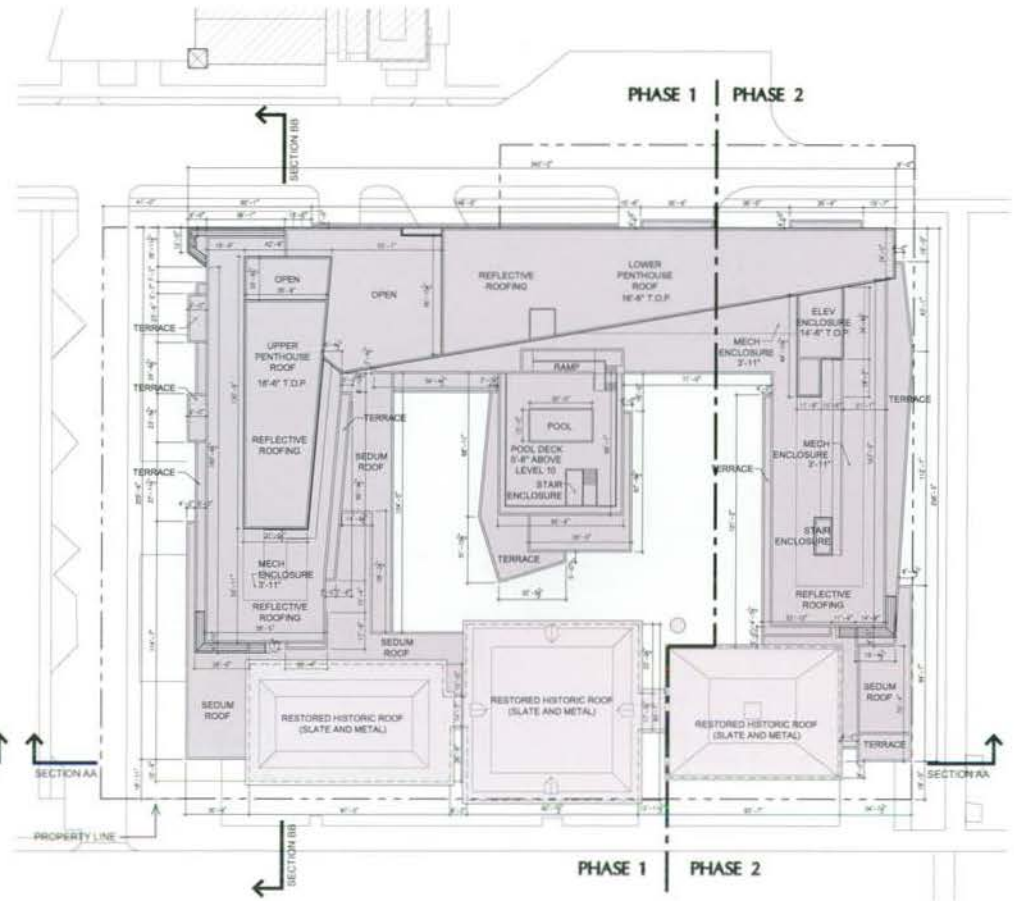


PENTHOUSE PLAN



ROOF PLAN

- NOTES:
1. THE EXTERIOR ELEVATIONS, INCLUDING DOOR AND WINDOW SIZES AND LOCATIONS, THE INTERIOR PARTITION LOCATIONS, THE NUMBER, SIZE, AND LOCATIONS OF RESIDENTIAL UNITS, STAIRS AND ELEVATORS ARE PRELIMINARY AND SHOWN FOR ILLUSTRATIVE PURPOSES ONLY. THE PARKING SPACE LAYOUT IS SHOWN FOR ILLUSTRATIVE PURPOSES ONLY. THE FINAL LAYOUTS MAY VARY.
  2. REFER TO SHEET L1 FOR LANDSCAPE PLAN.

**RANDALL SCHOOL**

65 EYE STREET SW, WASHINGTON, DC | October 19, 2007 | ©2007 Shalom Baranes Associates, P.C.



PUD SUBMISSION - REVISED

shalom baranes associates architects

PENTONING COMMISSIONS A5

District of Columbia  
CASE NO.07-13D  
EXHIBIT NO.14C



**RANDALL SCHOOL**

shalom baranes associates | architects

65 EYE STREET SW, WASHINGTON, DC | October 19, 2007 | ©2007 Shalom Baranes Associates, P.C.

PUD SUBMISSION - REVISED

EYE STREET VIEW | A17





## RANDALL SCHOOL

65 EYE STREET SW, WASHINGTON, DC | October 19, 2007 | ©2007 Shalom Baranes Associates, P.C.

PUD SUBMISSION - REVISED

shalom baranes associates | architects

EYE STREET VIEW | A18